

HRS REFRACTORY STOP

Used With Delta Refractory Drilling System

TSHRS

- Prevents Refractory From Entering a Delta Controls HTP Mounting Nozzle.
- Prepares the Refractory Top Face for Drilling
- Produces a Smooth Well Collar Support Face.
- Produces a Flat Refractory Face at 90° to the Centerline of the Nozzle
- Refractory Stop is Automatically Centered in the Nozzle; preset for the nozzle height.

APPLICATIONS

The refractory face at the bottom of a mounting nozzle must be even and flat before a hole for the HTP thermocouple can be drilled. Excess refractory can inadvertently get into the nozzle during the process of installing a liner in the reactor vessel. Any excess refractory at the bottom of the nozzle causes the face to be irregular and can also cause it to be sloped at an angle to the nozzle centerline. Such a surface will cause the diamond core drill bit to start the hole off center and then continue at an angle to the nozzle. An incorrectly drilled hole can cause the HTP thermocouple to be broken off as the refractory shifts during reactor firing.

The Delta Controls HRS refractory stop keeps refractory out of the nozzle. This is done by positioning a seal plate flush with the bottom of the nozzle to shell transition. Other preventative measures, such as taping or trowling, do not reliably keep the refractory out. The HRS produces a smooth flat bottom face which allows the diamond core bit to drill a straight hole which is on the centerline of the mounting nozzle.

The HRW refractory protective well is supported by the top face of the refractory. The HRW can now be installed into the correct position. It will be located on the centerline of the mounting nozzle and will also be at the correct elevation and distance from the mounting flange face.

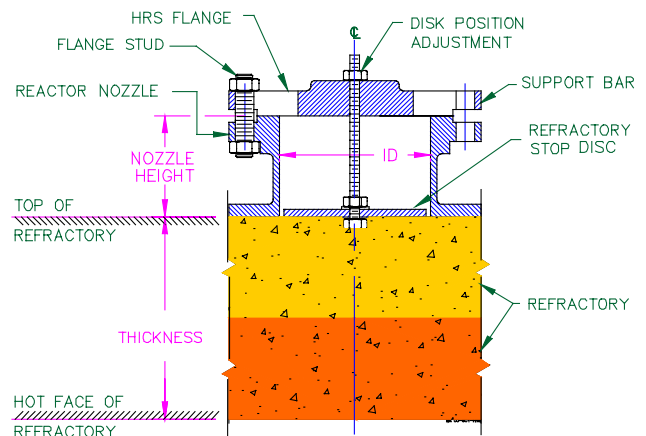


SHOWN WITH 6" REFRACTORY STOP

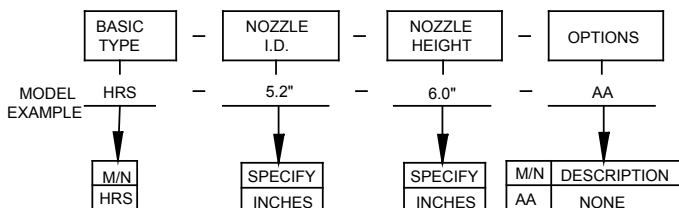
SPECIFICATIONS

- Flange Size: ANSI 2" 150# to 6" 300#
DIN 50 mm To 175 mm
- Nozzle ID: 1.9" (44 mm) thru 6.7" (170 mm)
- Nozzle Height : As required; 4" to 6" (100 to 150 mm) Is recommended as best practice
- Materials: Aluminum, plated steel, PVC

TYPICAL INSTALLATION



MODEL NUMBERING SYSTEM



DELTA CONTROLS Corporation
Engineered Sensors – For Difficult Services

585 Fortson Street Shreveport, La. 71107
Voice: (318) 424-8471 Fax: (318) 425-2421
Email: delta@deltacnt.com Web: www.deltacnt.com
The most recent version of this document is available at www.deltacnt.com/00-