

MODEL HFS FLUSH GAS CONTROL STATION

For use with Model HTP & HTX Claus Reaction Furnace Thermocouples

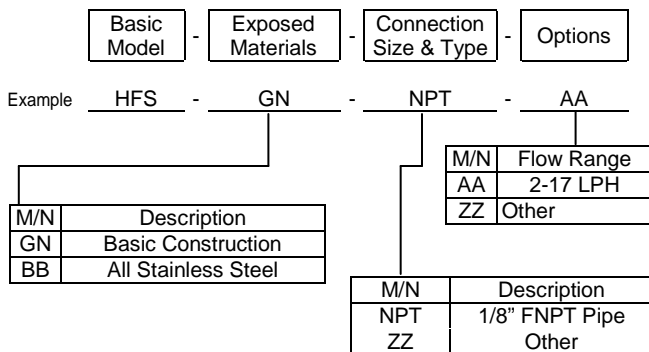
FEATURES

- Accurate flush gas pressure and flow control insures maximum temperature sensing accuracy
- Built-in 5 micron filter traps particulates and prevents plugging of the thermocouple internal passages
- Corrosion resistant, suitable for the severe environments of sulfur recovery units.
- All stainless steel NACE compliance available
- Mounts on a vertical surface or 2" pipe stand

APPLICATION

The Model HFS flush station is designed to work with the Models HTP & HTX Claus Furnace Thermocouples. It maintains the pressure inside the thermocouple body at approximately 4.0 PSIG (0.3 bar) above the maximum furnace operating pressure. This prevents any possible contamination of the thermocouple junction by reaction gases entering the thermocouple through any small leaks. To avoid measurement errors, the HFS accurately controls the gas flow rate through the thermocouple preventing any error caused by flush gas cooling the thermocouple junctions.

MODEL NUMBERING SYSTEM



SPECIFICATIONS

Flow Range: 2-17 LPH

Pressure Indicator: 2.5"Ø; 0-60 PSIG (0-4 bar)

All stainless steel internal and external parts

Flow Control: Constant mass flow rate type

Pressure Control Range: 2 - 50 PSIG (0.1 - 3.5 bar)

Filter: 5 micron sintered polypropylene

Drain: Manual valve

Materials:

Meter body: Aluminum with S.S. trim,
(All stainless steel available)

Pressure Body: Zinc with S.S. trim,
(All stainless steel available)

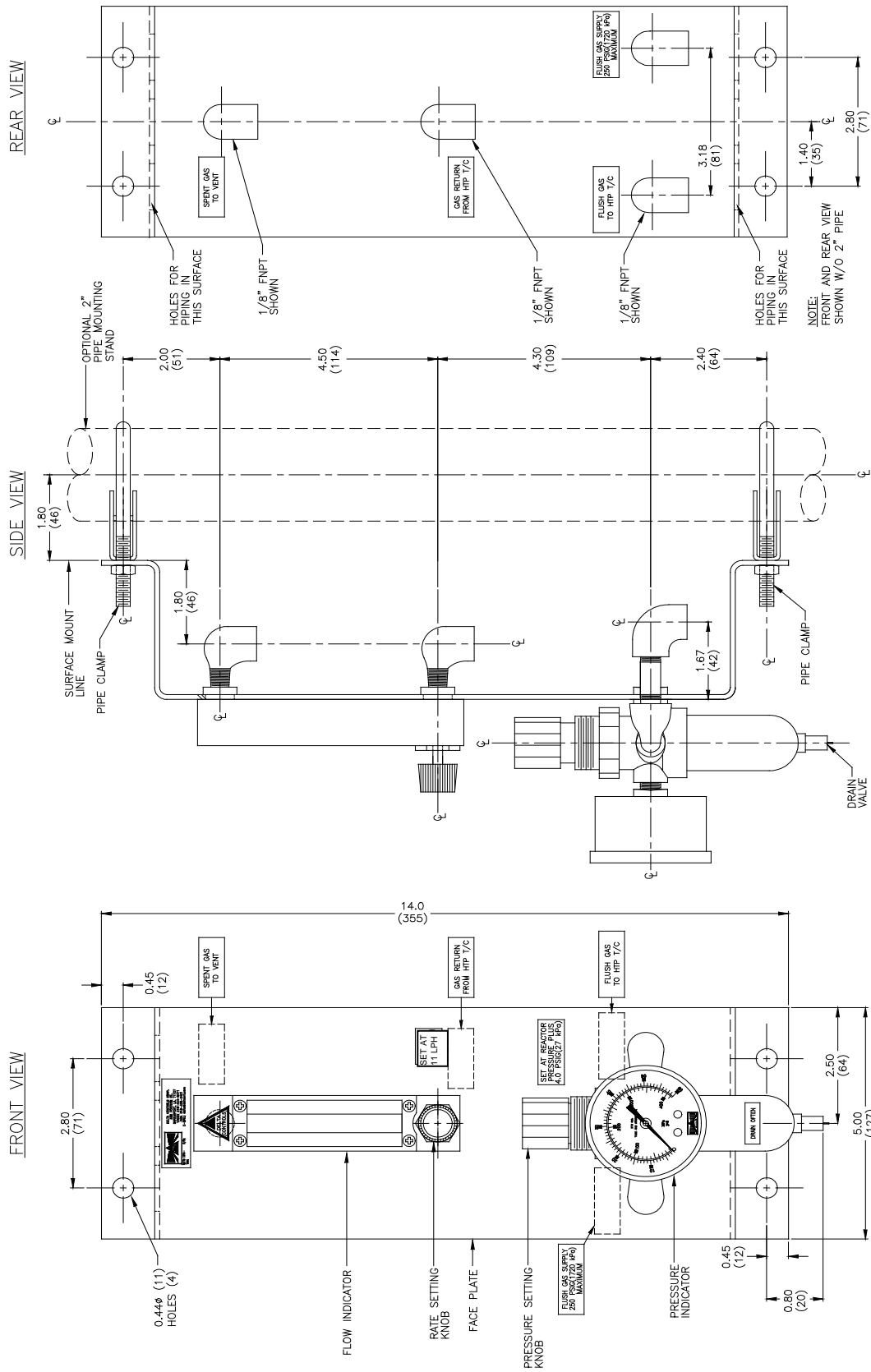
Connection Fittings: Stainless Steel, 1/8" FNPT
(other connections sizes & types available)

Faceplate and Pipe Clamps: Stainless steel

Supply Pressure: 25 - 250 PSIG (1.75-17 bar)

Supply Gas: Nitrogen (preferred) or clean dry air

MODEL HFS FLUSH GAS CONTROL STATION LAYOUT AND DIMENSION DRAWING



Field Connections: Piping or tubing may arrive at the HFS station horizontally (from the right and/or left), vertically (from above or below) or any combination of these directions. Connection fittings may be rotated ±200°.



Shreveport, Louisiana USA

Phone: +1(318) 424 8471 Fax: +1(318) 425 2421

E-mail: delta@deltactm.com

Website: <http://www.claustemp.com>